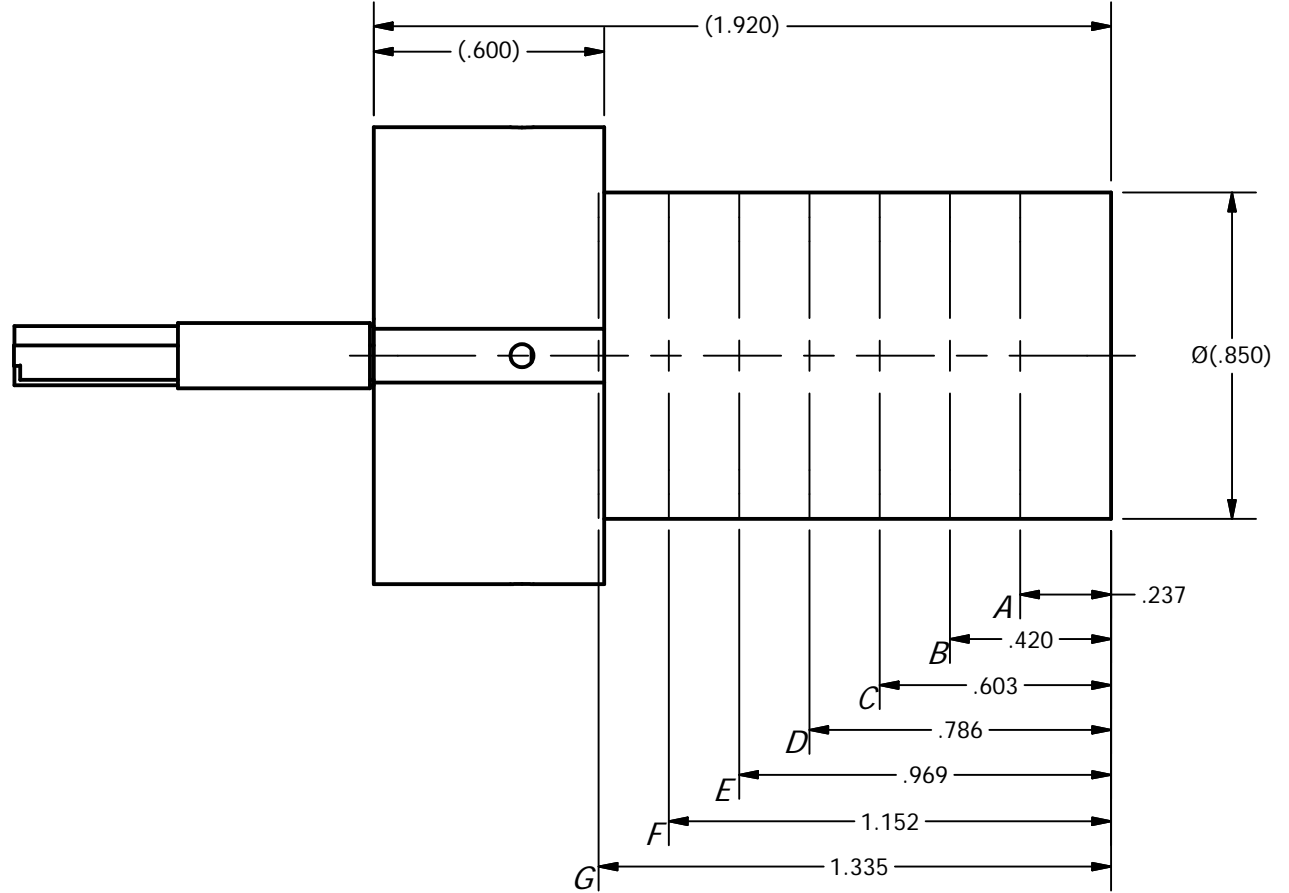
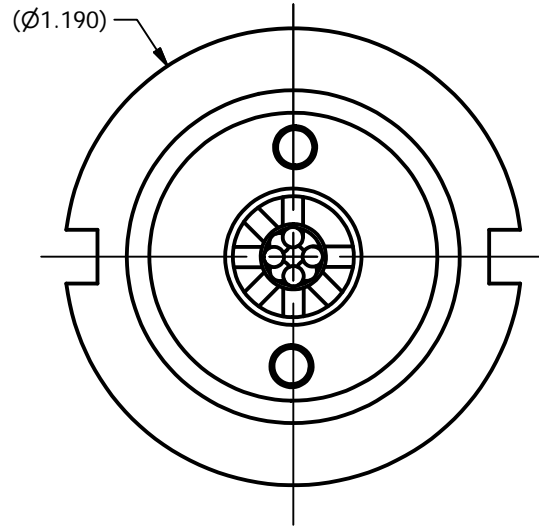


2

1

REVISION HISTORY			
REV	DESCRIPTION	DATE	APPROVED
C	Update Wiring Diagram	02/18/2011	

**NOTES:**

- TEMPERATURE RATING: 392°F (200°C)
CURRENT: 4 AMPS MAX
VOLTAGE: 500 VDC
- WIRE LENGTH TO BE 24" MIN. OR AS DETERMINED BY CUSTOMER
- CONTACTS ARE GOLD PLATED

CONTACT	WIRE SIZE	COLOR
A	24 AWG	ORANGE
B	24 AWG	BROWN
C	24 AWG	BLACK
D	24 AWG	RED
E	24 AWG	TBD
F	24 AWG	TBD
G	24 AWG	TBD

WIRING DIAGRAM

DRAWN S. GIBSON	1/12/2010
CHECKED	
APPROVED	
UNLESS OTHERWISE SPECIFIED: DIMENSIONS ARE IN INCHES [MM] TOLERANCES: ANGULAR: ±.50° TWO PLACE DECIMAL ±.015 THREE PLACE DECIMAL ±.005 FOUR PLACE DECIMAL ±.0005 FILLET: R.032 MAX REMOVE ALL BURRS AND BREAK SHARP EDGES .015 MAX	



TITLE
**7-CONDUCTOR FEMALE IN-LINE
CONCENTRIC STAB CONNECTOR**

SIZE	MATERIAL	DWG NO	REV
A	SEE 915-0208-01	915-0208-SALES	C

All rights reserved. This document and the information contained herein are the sole property of Canyon Manufacturing Inc. Any reproduction or distribution in whole or in part without written permission of Canyon Manufacturing Inc. is prohibited.

SHEET 1 OF 1

2

1