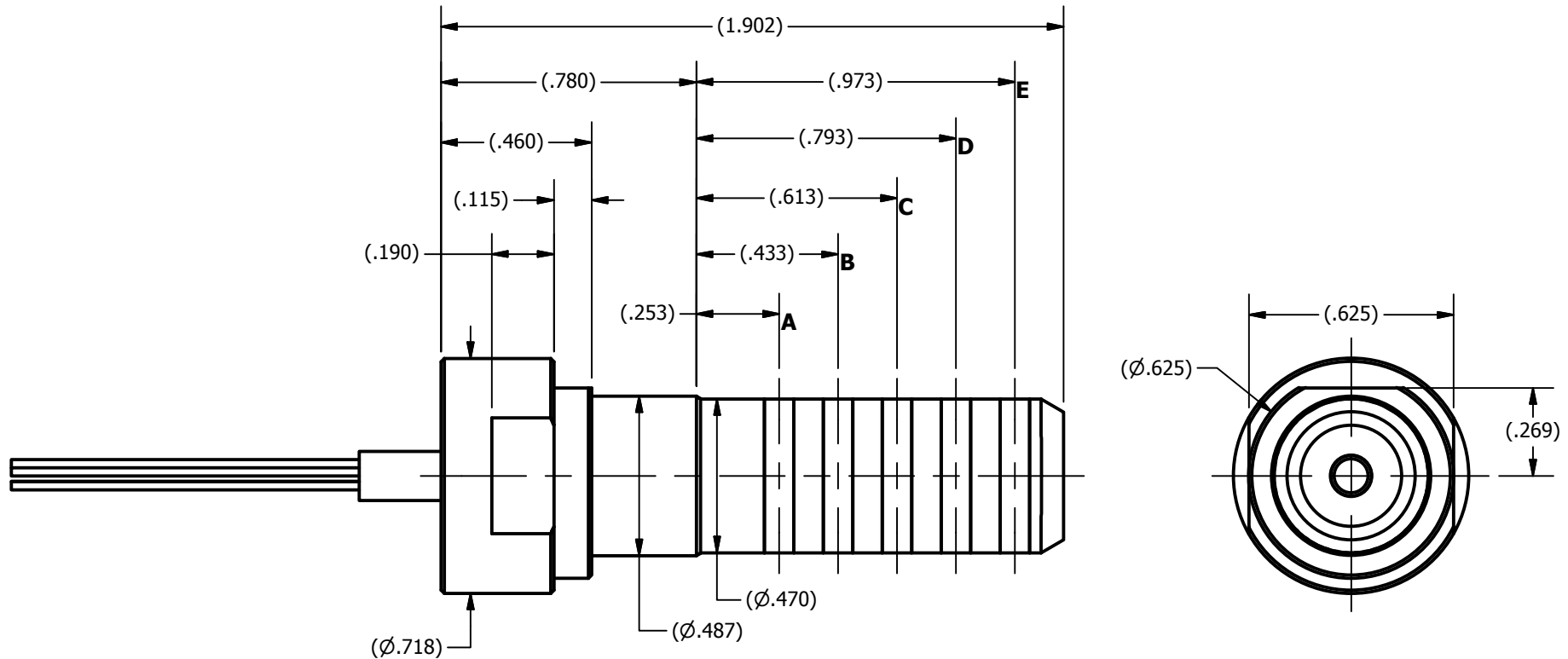


2

1

## REVISION HISTORY

REV	DESCRIPTION	DATE	APPROVED
B	Update Wiring Diagram	02/16/2011	



## NOTES:

- TEMPERATURE RATING: 392°F (200°C)
- WIRE LEADS TO BE 18" MINIMUM OR AS DETERMINED BY CUSTOMER.
- CONTACTS ARE GOLD PLATED PER MIL-G-45204C, TYPE I OR II, GRADE C OR D, CLASS 1 OVER NICKEL PER QQ-N-290A, CLASS 1, GRADE G

CONTACT	WIRE SIZE	COLOR
A	24 AWG	BLACK
B	24 AWG	BROWN
C	24 AWG	RED
D	24 AWG	ORANGE
E	24 AWG	YELLOW

## WIRING DIAGRAM

DRAWN S. GIBSON	9/17/2010
CHECKED	
APPROVED	
UNLESS OTHERWISE SPECIFIED: DIMENSIONS ARE IN INCHES [MM] TOLERANCES: ANGULAR: ±.50° TWO PLACE DECIMAL ±.015 THREE PLACE DECIMAL ±.005 FOUR PLACE DECIMAL ±.0005 FILLET: R.032 MAX REMOVE ALL BURRS AND BREAK SHARP EDGES .015 MAX	

**Canyon**  
Manufacturing Services, Inc.

TITLE

5-CONDUCTOR MALE TO 15 PIN MICRO-D  
CONNECTOR ASSEMBLY

SIZE MATERIAL

A 915-0117-01

DWG NO

915-0117-SALES

REV

B

All rights reserved. This document and the information contained herein are the sole property of Canyon Manufacturing Inc. Any reproduction or distribution in whole or in part without written permission of Canyon Manufacturing Inc. is prohibited.

SHEET 1 OF 1

2

1