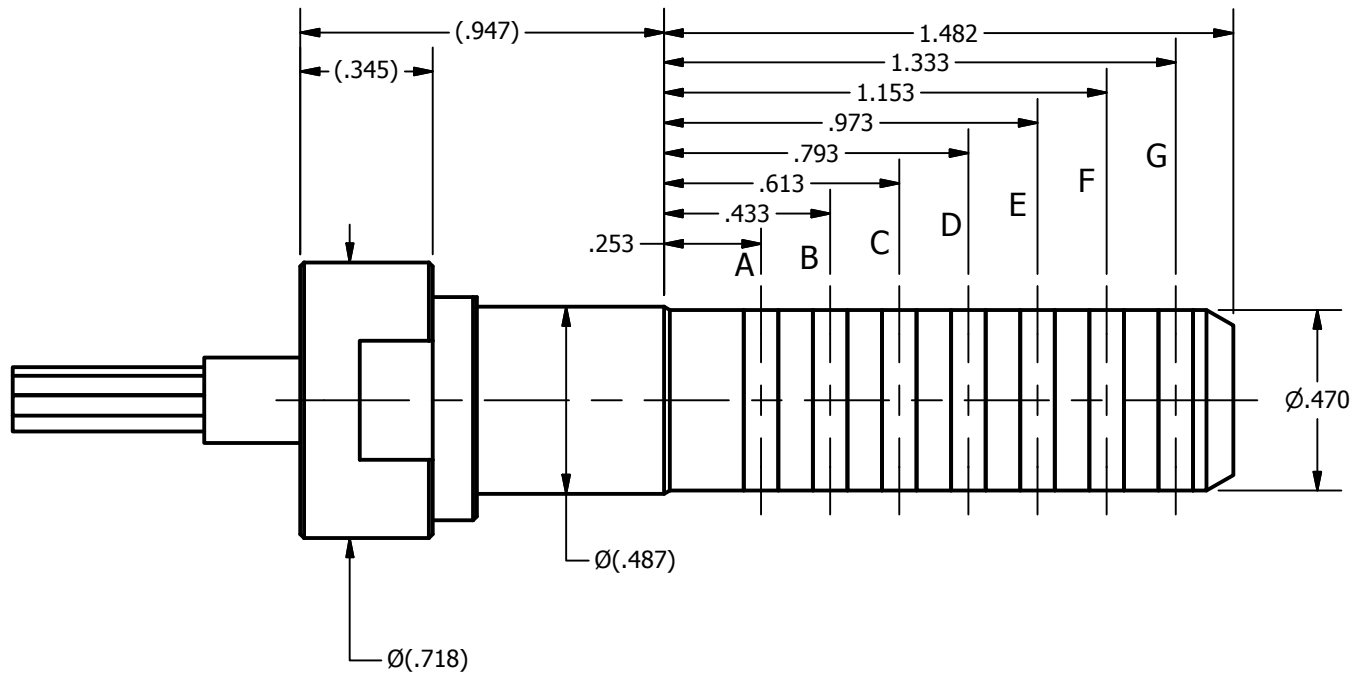


| | | | |
|-----|-----------------------|-----------|----------|
| REV | DESCRIPTION | DATE | APPROVED |
| B | RELEASE TO PRODUCTION | 8/17/2010 | |



NOTES:

- TEMPERATURE RATING: 392°F (200°C)
CURRENT: 4 AMPS MAX
VOLTAGE: 500 VDC
- WIRE LENGTH TO BE 24" MIN. OR AS DETERMINED BY CUSTOMER
- CONTACTS ARE GOLD PLATED

| CONTACT | WIRE SIZE | COLOR |
|---------|-----------|--------|
| A | 24 AWG | ORANGE |
| B | 24 AWG | BROWN |
| C | 24 AWG | BLACK |
| D | 24 AWG | RED |
| E | 24 AWG | TBD |
| F | 24 AWG | TBD |
| G | 24 AWG | TBD |

WIRING DIAGRAM

| | |
|--------------------|------------|
| DRAWN S. GIBSON | 11/13/2009 |
| CHECKED | |
| APPROVED | |

UNLESS OTHERWISE SPECIFIED:
DIMENSIONS ARE IN INCHES [MM]
TOLERANCES:
ANGULAR: ±.50°
TWO PLACE DECIMAL ±.015
THREE PLACE DECIMAL ±.005
FOUR PLACE DECIMAL ±.0005
FILLET: R.032 MAX
REMOVE ALL BURRS AND BREAK SHARP
EDGES .015 MAX



| | | | |
|--|----------|---------------------------------|----------|
| TITLE 7-CONDUCTOR MALE IN-LINE CONCENTRIC STAB CONNECTOR | | | |
| SIZE A | MATERIAL | DWG NO 915-0105-SALES | REV B |

All rights reserved. This document and the information contained herein are the sole property of Canyon Manufacturing Inc. Any reproduction or distribution in whole or in part without written permission of Canyon Manufacturing Inc. is prohibited.